



PERFORMANCE ENHANCING PRODUCTS

2 STROKE SILENCER

YZ250 90 MX

PRODUCT PART NUMBER: DEPY2207

Product Information

Our 2 stroke silencers are designed to fit OE and DEP front pipes. The silencers are manufactured with a polished aluminium outer canister and a mild steel internal perforated core, surrounded with a high temperature Eglass packing. All silencers have been designed as a performance enhancing product for optimum power increase, we advise this to be used with a DEP front pipe. Our silencers are easily repackable.



WARNING

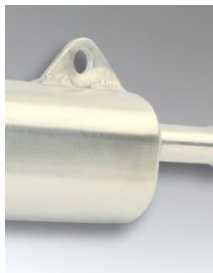
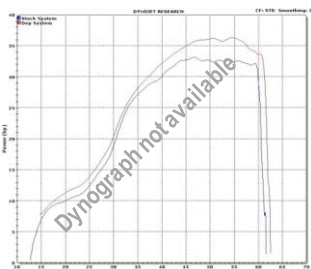
During use exhaust systems get hot. To avoid danger of burning, do not remove or touch until adequate cooling time has been allowed.

2 Stroke Silencer Fitting Instructions

Loosen the silencer mounting bolts from the frame and remove your original silencer from the bike. Install the DEP silencer, making sure it does not touch the sub-frame before tightening mounting bolts. Retain any rubber grommets/sleeves from the original silencer and refit on your DEP silencer, if required. All the exhaust fixing points should be slackened and then fully tightened allowing all frame mounting points to line up exactly. A silencer fitted under stress can cause failure or damage to the product. DEP cannot be held responsible for any incorrectly fitted products. The fitting to non-original equipment or DEP equipment is the responsibility of the end user.

2 Stroke Silencer Re-packing Instructions

The performance and low noise efficiency of this silencer will be impaired if it is not serviced on a regular basis. Remove the bolts or rivets, remove the end caps, inner core and packing material. Inspect and clean where necessary. Re-pack the silencer with DEP matt packing. To maintain peak performance the silencer should be inspected regularly and the packing material replaced if it has exceeded its serviceable life.



DEP PIPES
Tel: +44 (0)1622 765353
Website: www.deppipes.com

twitter: @deppipes
facebook: dep pipes
instagram: deppipes


GET THE UNFAIR ADVANTAGE